

GJB599I 系列集束连接器产品一

材料及镀层:

内导体: 黄铜镀金

插孔及接触件: 镀青铜镀金

绝缘介质: PTFE

外壳: 黄铜镀金

电气性能:

阻抗: 50 Ω

频率范围: DC~6GHz

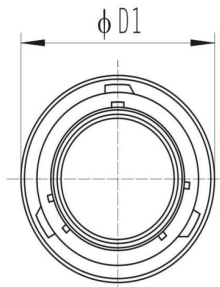
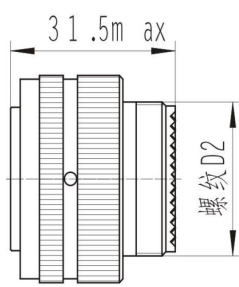
电压驻波比: ≤ 1.2 DC~3GHz ≤ 1.4 DC~6GHz

绝缘电阻: ≥ 5000 MΩ

耐电压: 1000V (海平面)

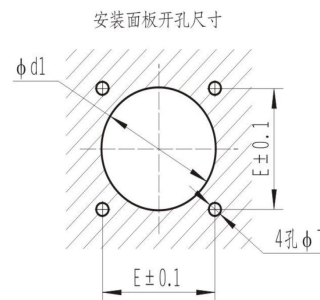
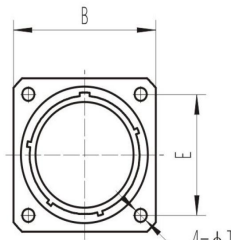
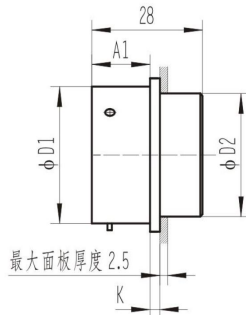


JY27467 插头

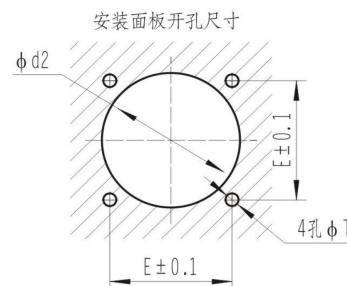
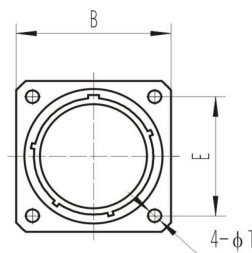
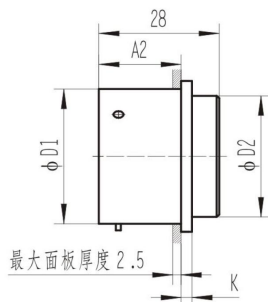


壳体号	D1 max	螺纹 D2 UNEF-2A
09	21.7	0.4375-28 UNEF-2A
11	25.0	0.5625-24 UNEF-2A
13	28.2	0.6875-24 UNEF-2A
15	31.3	0.8125-20 UNEF-2A
17	34.4	0.9375-20 UNEF-2A
19	37.4	1.0625-18 UNEF-2A
21	40.5	1.1875-18 UNEF-2A
23	44.0	1.3125-18 UNEF-2A
25	46.8	1.4375-18 UNEF-2A

JY27496 方形法兰前装插座



JY27496 方形法兰后装插座



壳体号	D1	D2	A1	A2	K	B	E	T	d1min	d2min
09	14.6	11.2	16.1	20.9	2.4	23.8	18.26	3.2	12.5	16.7
11	17.8	14.5	16.1	20.9	2.4	26.2	20.62	3.2	15.5	20.2
13	21.6	18.0	16.1	20.9	2.4	28.6	23.02	3.2	19.5	24.5
15	24.8	20.5	16.1	20.9	2.4	31.0	24.62	3.2	21.5	27.7
17	28.0	23.8	16.1	20.9	2.4	33.3	26.98	3.2	25.0	30.9
19	30.7	26.5	16.1	20.9	2.4	36.5	29.36	3.2	28.0	32.9
21	33.8	29.7	15.3	20.1	3.1	39.7	31.76	3.2	31.5	36.2
23	37.0	32.8	15.3	20.1	3.1	42.9	34.92	3.7	34.5	39.3
25	40.2	36.0	15.3	20.1	3.1	46.0	38.10	3.7	37.5	42.5

射频通道：

