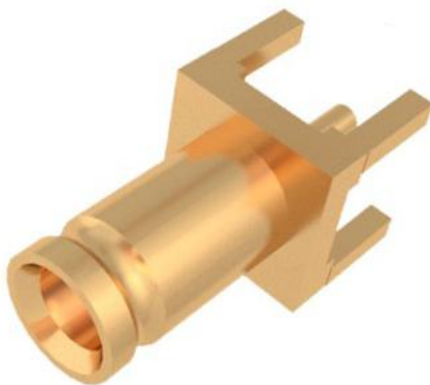


1、产品特征描述 Product Feature Description:

SAA(1.0/2.3)系列射频同轴连接器是一种超小型推入自锁式连接器，这些连接器具有不同的连接机构,例如:螺纹、推拉、和卡锁连接机构。在华贵是机架和面板应用时，面板的间距可以从完全插合位置至 1.7mm。连接器通常用于低功率应用场合。其特点是插拔方便、连接可靠、抗震性能优良。

SAA (1.0 / 2.3) series RF coaxial connectors are an ultra-small push-in self-locking connector that has different connecting mechanisms such as threading, push-pull, and latching mechanisms. In the case of luxury rack and panel applications, the panel spacing can be from the fully engaged position to 1.7mm. Connectors are typically used for low power applications. It is characterized by convenient plug, reliable connection, excellent seismic performance.



2、样册中需要的技术参数表格:

Contributes presents in need of technical parameter table:

SAA 系列连接器主要技术参数
SAA series connector main technical parameters

执行标准 executive standard		
民品 civilian goods	通用规范 General specification	GJB 680 《射频同轴连接器转接器通用规范》(MIL-PRF-55339)
		GJB 680 《general specification for rf coaxial connector adapter》(MIL - PRF - 55339)
		GJB 681 《射频同轴连接器通用规范》(MIL-PRF-39012)
		GJB 681 《rf coaxial connector general specification》(MIL - PRF - 39012)



		GJB 976 《同轴、带状线或微带传输线用射频同轴连接器通用规范》 (MIL-DTL-83517) GJB 976 《coaxial, stripline and microstrip transmission line with rf coaxial connector general specification》 (MIL - DTL - 83517)
	系列分规范 Series points specification	/
军品 Military goods	通用规范 General specification	GB/T 11313.1 《射频连接器 第1部分：总规范 一般要求和试验方法》 (IEC 61169-1) GB / T 11313.1 《RF connectors Part 1: General specification General requirements and test methods》 (IEC 61169-1)
	系列分规范 Series points specification	/
产品界面 Product interface		IEC 61169-29
额定值 rated value		
工作频率 (GHz) operating frequency (GHz)		6
标称阻抗 (Ω) Nominal resistance (Ω)		50/75
温度范围 (°C) Temperature range (°C)		-55°C ~ 125°C
电气性能 Electrical properties		
额定功率 rated power		333V
绝缘电阻 Insulation resistance		1000M Ω
电压驻波比 (VSWR) Pattern voltage standing wave		≤1.35



射频插入损耗 (dB)		0.05 √ f dB	
Radio frequency insertion loss			
接触电阻 (m Ω)	内导体 Inner conductor	10.0	
	外导体 Outer conductor	3.0	
Contact resistance (m Ω)			
介质耐电压 (V)		750V	
Dielectric Withstand Voltage (V)			
耐射频高电位电压 (V)		/	
High frequency resistance (V)			
射频泄漏 (全插合状态)		螺纹连接 Threaded connection	≥90dB, 1GHz
		滑动、卡锁、推拉连接 Slide, lock, push and pull connection	≥70dB, 1GHz
RF leakage (fully interlocked)			
机械性能 mechanical property			
啮合力和	啮合力 Engagement	不大于 25N Not more than 25N	
分离力	分离力 Separation force	3N<分离力<25N 3N <separation force <25N	
连接机构耐力矩		不适用。Not applicable.	
The durability of the connector			
插合特性 Insertion characteristics	中心接触件 Center contact pieces	插针型 Pin type	不适用 Not applicable.
		插孔型 Jack type	分离力 (吊克力): 不小于 0.2N Separation force (hanging grams): not less than 0.2N
	外接触件 Outside contact pieces	插针型 Pin type	分离力 (吊克力): 不小于 0.7N Separation force (hanging grams): not less than 0.7N
		插孔型	不适用 Not applicable.



		Jack type	
中心接触件的固定性 Fixedness of the center contact		轴向力: 10N 扭矩: 0.02N.m Axial force:10 N Torque: 0.02N.m	
连接器的耐久性 The durability of the connector		500	
电缆保持力 Cable retention	轴向力 Axial force	IEC96-50-1	32 N
		IEC96-50-2	53 N (单层编织电缆) (Single layer braided cable)
		IEC96-50-2	105 N (双层编织电缆) (Double-layer braided cable)
	扭矩 Torque	IEC96-50-1	0.005 N·m
		IEC96-50-2	0.013 N·m (单层编织电缆) (Single layer braided cable)
		IEC96-50-2	0.030 N·m (双层编织电缆) (Double-layer braided cable)
连接机构的保持力 The retention of the connecting mechanism		200	
安全丝孔强度 Safety wire hole strength		不适用 Not applicable.	
环境性能 Environmental performance			
盐雾 (腐蚀) Salt spray (corrosion)		48H	
高频振动 High frequency vibration		IEC61169-1 (9.3.3)	
冲击 (规定脉冲) Impact (specified pulse)		IEC61169-1 (9.3.14)	
温度冲击 Temperature impact		/	
耐湿 Resistant to moisture		IEC61169-1 (9.4.3)	
材料 Material			
外导体 Outer conductor		锡磷青铜、铍青铜 Tin phosphor bronze, beryllium bronze	
内导体 Inner conductor		黄铜 brass	
绝缘介质 Insulation medium		PTFE	
密封圈 Seal ring		硅橡胶 Silicone Rubber	

表面镀层 Surface coating	
外导体 Outer conductor	镀金、镀镍 Gold-plated, nickel-plated
内导体 Inner conductor	镀金 Gold-plated

3、推荐安装尺寸 Recommended installation dimensions

